

Otasuke FAQ's

FAQ

Installing on Windows XP

MEMO

- * In case that the dialog boxes which request restart are displayed during the virtual COM bus driver, select [NO] for all requests.

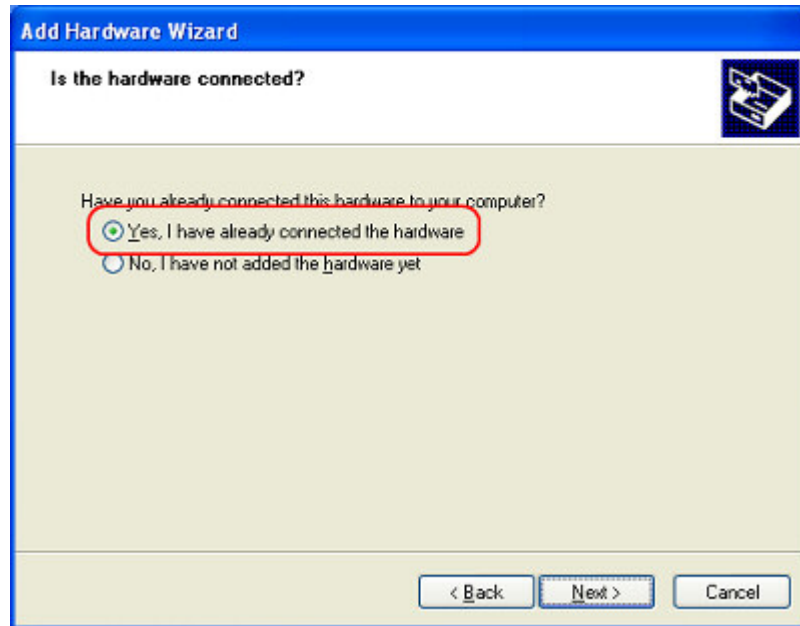
Installing Virtual COM Bus Driver

To install the virtual COM bus driver, please follow [Start] -> [Settings] -> [Control Panel] -> [Add hardware].

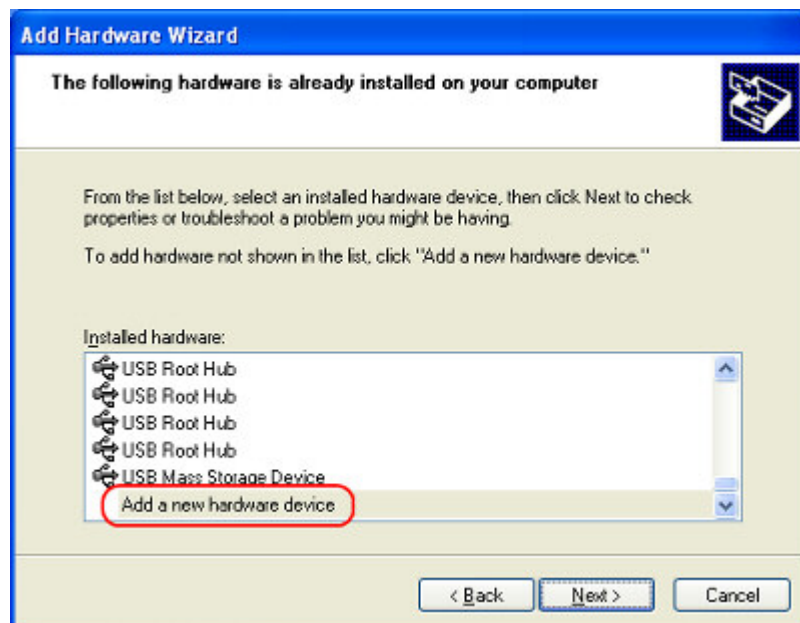
1. Start up [Add Hardware Wizard] on the control panel. The dialog box [Welcome to the Add Hardware Wizard] will be displayed. Follow the instruction given by the installation wizard.



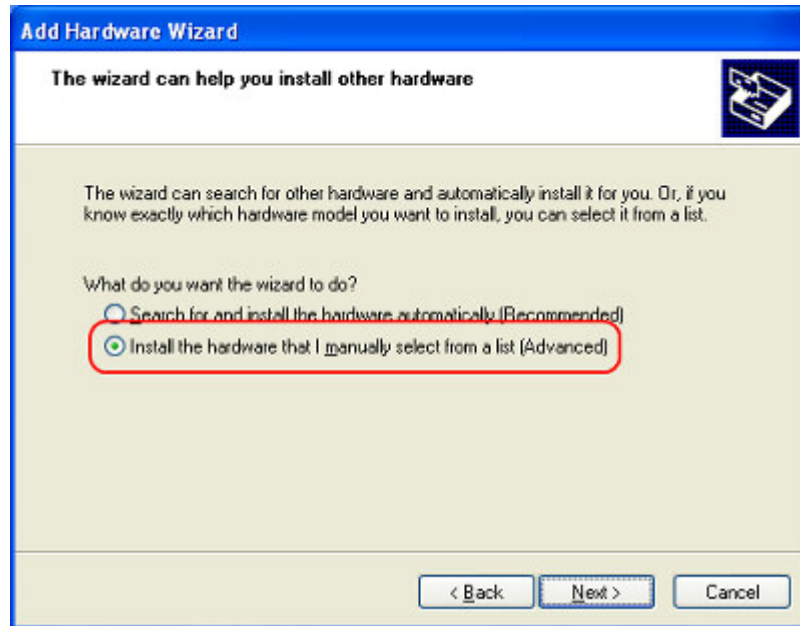
2. The dialog box [Is the hardware connected?] will be displayed. Select [Yes, I have already connected the hardware] and click [Next].



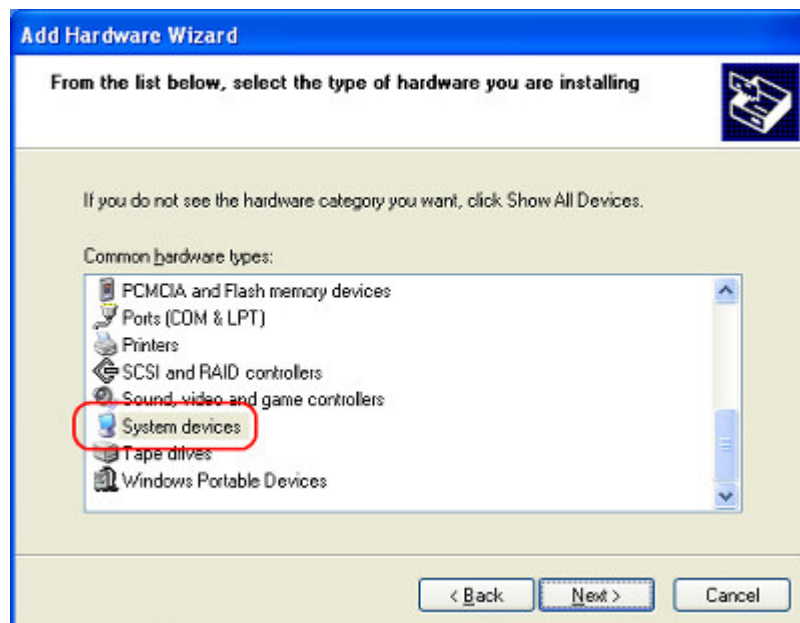
3. The dialog box [The following hardware is already installed on your computer] will be displayed. Select [Add a new hardware device] and click [Next].



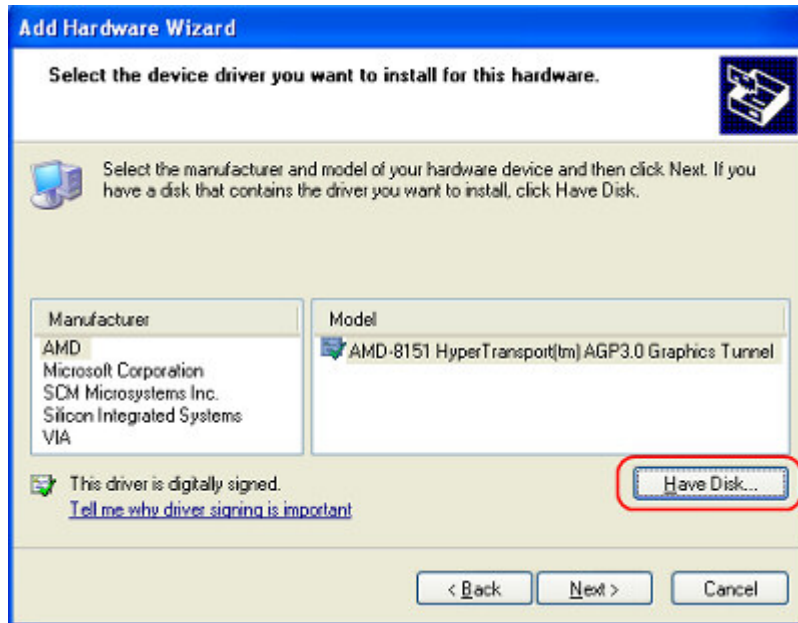
4. The dialog box [The wizard can help you install other hardware] will be displayed. Select [Install the hardware that I manually select from a list (Advanced)] and click [Next].



5. The dialog box [From the list below, select the type of hardware you are installing] will be displayed. Select [System devices] and click [Next].

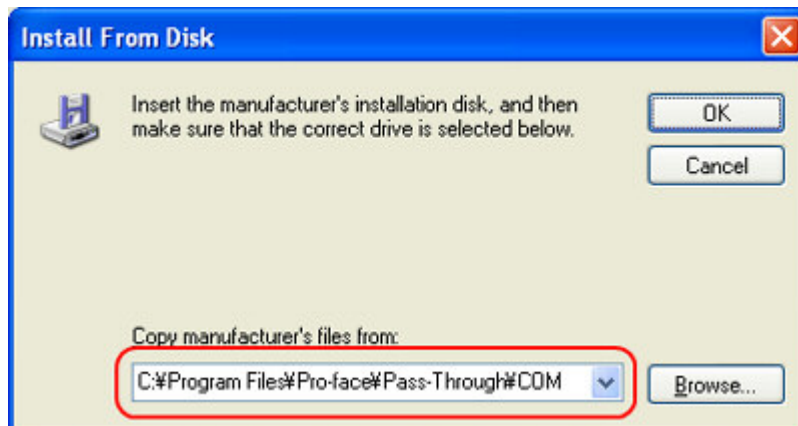


6. The dialog box [Select the device driver you want to install for this hardware] will be displayed. Click [Have Disk].



7. The dialog box [Install From Disk] will be displayed. Click [Browse] and select "vrcombus.inf".

If you did not change where to install to when you installed Pass-Through Configuration Tool, specify "C:\Program Files\Pro-face\Pass-Through\COM".

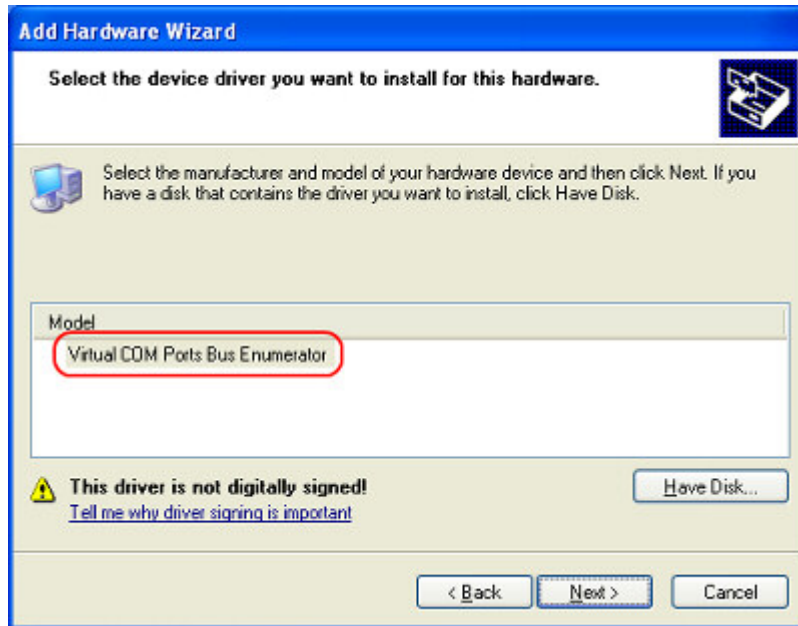


MEMO

* INF file "vrcombus.inf" for the virtual COM driver, which is required for installation, is in COM folder where Pass-Through Configuration Tool has been installed.

8. Select [Virtual COM Ports Bus Enumerator] from the list in the dialog box [Select the device driver you want to install for this hardware]. Click [Next] to complete the installation.

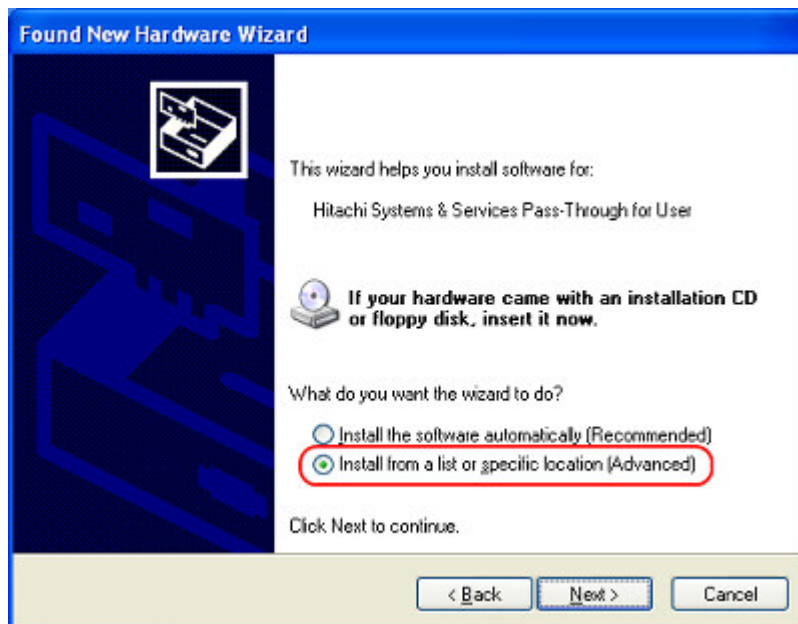
A new hardware is found automatically and the virtual COM port driver wizard will start.



Installing Virtual COM Port Driver

The virtual COM port driver is installed on [Found New Hardware Wizard].

1. The dialog box [This wizard helps you install software for: Virtual COM Port] will be displayed. Select [Install from a list or specific location (Advanced)] and click [Next].



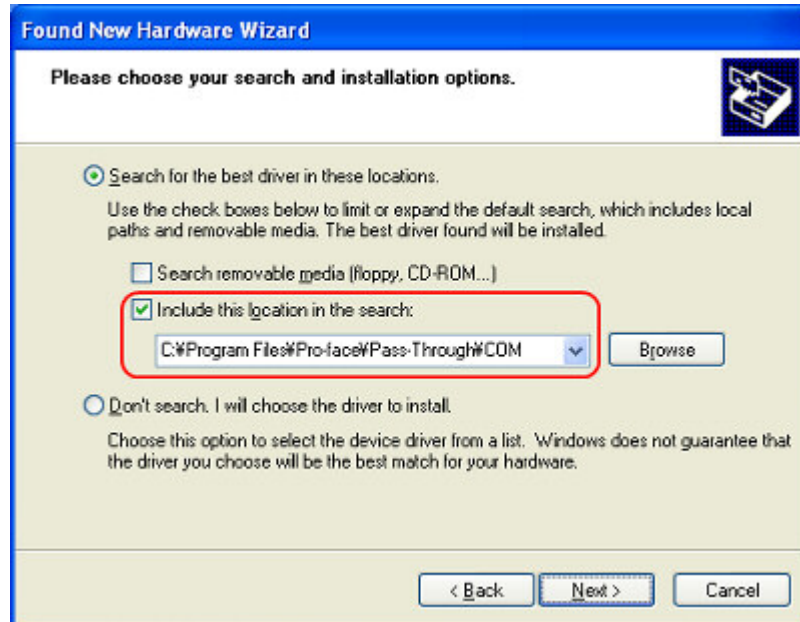
MEMO

* Depending on the environment, a dialog box [Welcome to the Found New Hardware Wizard] may be displayed. In this case, select [No, not this time] and click [Next].

2. The dialog box [Please choose your search and installation options] will be displayed. Remove the

check on [Search removable media (floppy, CD-ROM....)] and put a check on [Include this location in the search:].

If you did not change where to install to when you installed Pass-Through Configuration Tool, "C:\Program Files\Pro-face\Pass-Through\COM" is still specified. Skip Procedure 3.



3. Click [Browse] and select the pass where INF file for the virtual COM port driver is stored (COM folder where Pass-Through Configuration Tool has been installed). Click [OK].



4. The dialog box [The software you are installing for this hardware: Pass-Through for User] will be displayed. Click [Continue Anyway] to complete the installation.



5. There are eight virtual COM port drivers. Install all virtual COM port drivers by repeating Procedure 1 through 5.

[↑Back to top page](#)

--> [Returns to the previous page](#)

[FAQ for use](#) | [Protection of Personal Information](#) | [Trademark Acknowledgments](#) | [About Intellectual Property Rights](#) | [Terms of Use](#)
Copyright (C) 2005- 2007 Digital Electronics Corporation All rights reserved.



Reissue Password

Otasuke Pro! Search:

Search

Pro-face

| [Products](#) | [Download](#) | [Contact us](#) | [Back to Top](#) |

Otasuke FAQ's

FAQ

Installing on Windows 2000

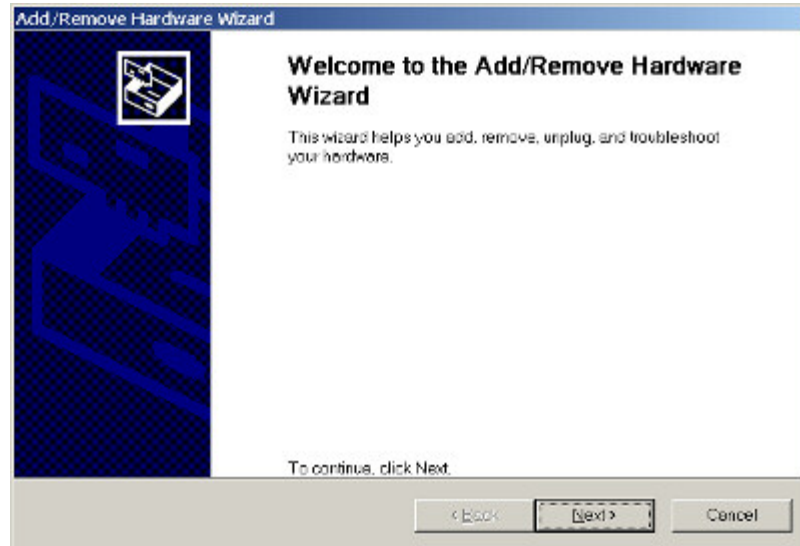
NOTE

* In case that the dialog boxes which request restart are displayed during installing the virtual COM bus driver, select [No] for all requests.

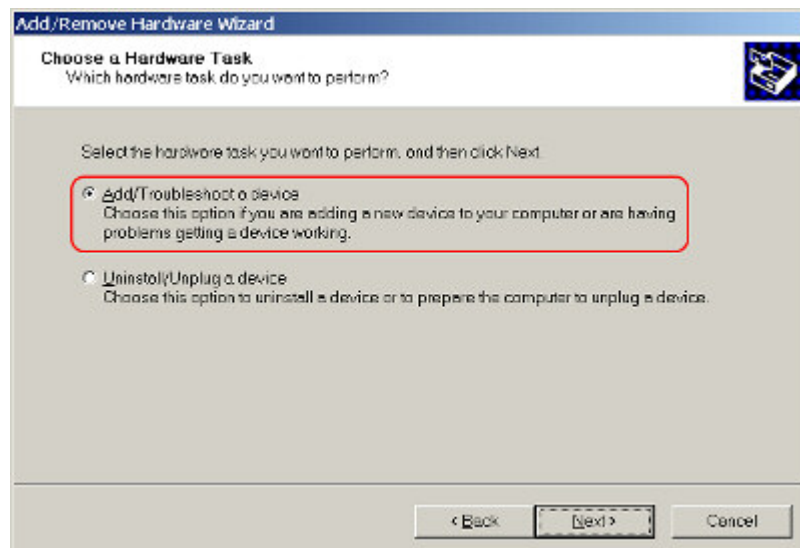
Installing Virtual COM Bus Driver

To install the virtual COM bus driver, please follow [Start] -> [Settings] -> [Control Panel] -> [Add/Remove Hardware].

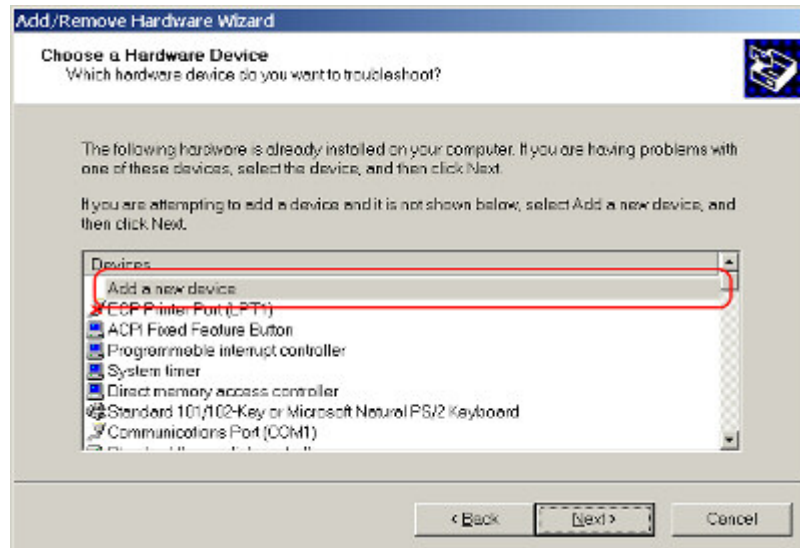
1. Start up [Add/Remove Hardware Wizard] on the control panel. The dialog box [Welcome to the Add/Remove Hardware Wizard] will be displayed. Follow the instruction given by the installation wizard.



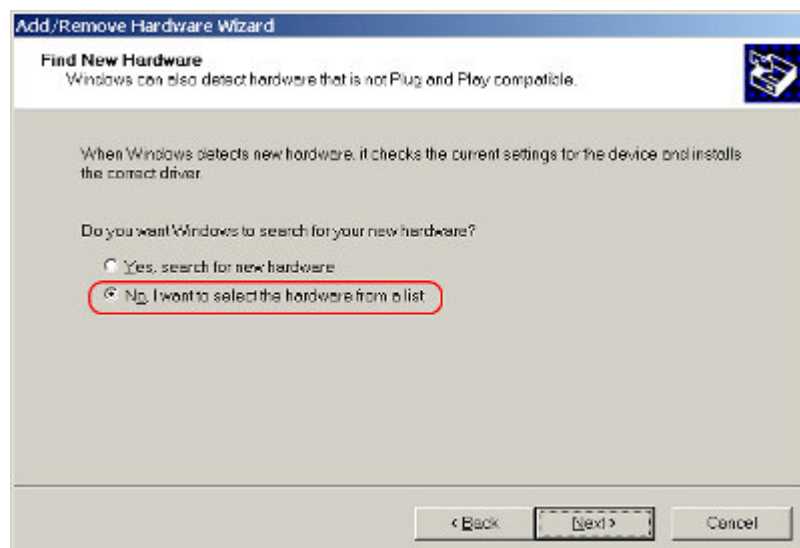
2. The dialog box [Choose a Hardware Task] will be displayed. Select [Add/Troubleshoot a device] and click [Next].



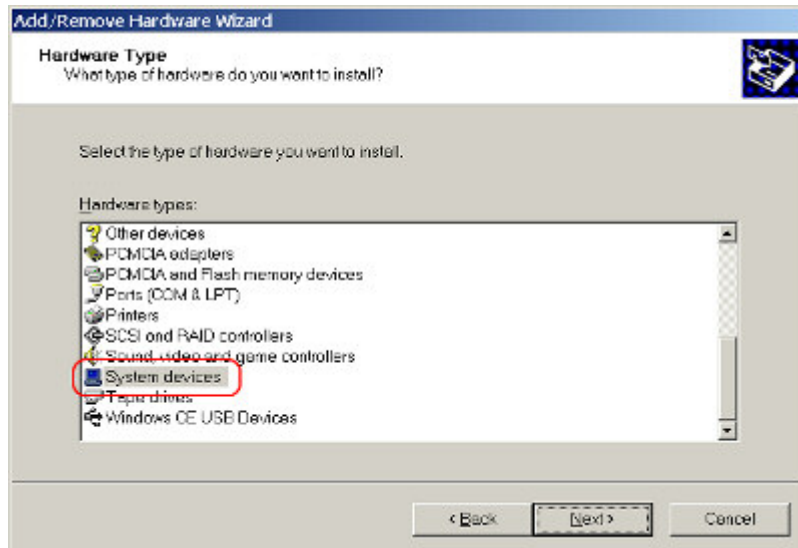
3. The dialog box [Choose a Hardware Device] will be displayed. Select [Add a new device] and click [Next].



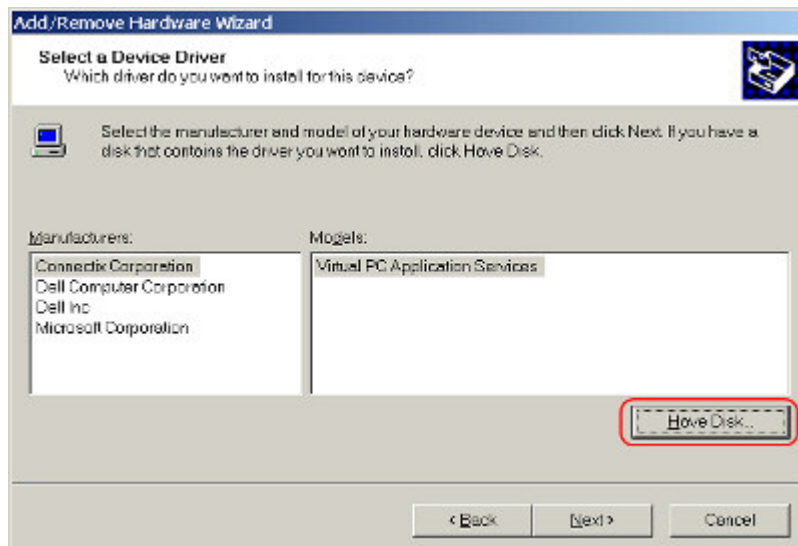
4. The dialog box [Find New Hardware] will be displayed. Select [No, I want to select the hardware from a list] and click [Next].



5. The dialog box [Hardware Type] will be displayed. Select [System devices] and click [Next].



6. The dialog box [Select a Device Driver] be displayed. Click [Have Disk].



7. The dialog box [Install From Disk] will be displayed. Click [Browse] and select "vrcombus.inf".

If you did not change where to install to when you installed Pass-Through Configuration Tool, specify "C:\Program Files\Pro-face\Pass-Through\COM".

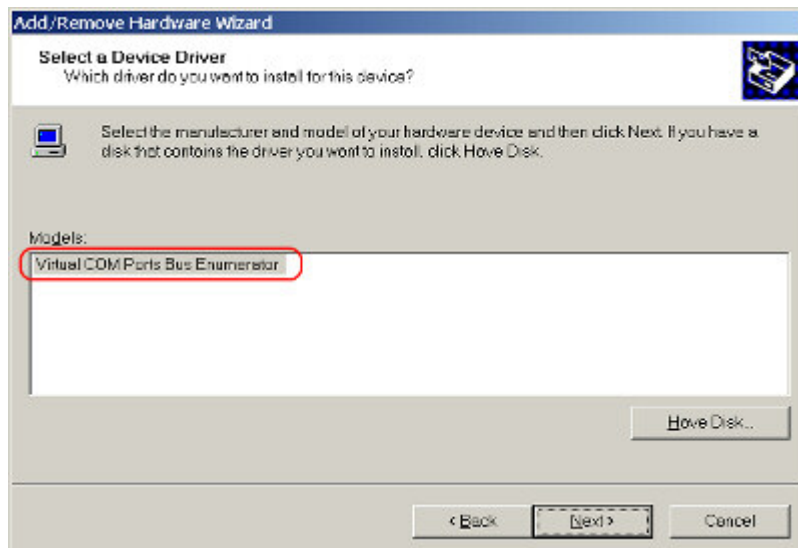


MEMO

* INF file "vrcombus.inf" for the virtual COM driver, which is required for installation, is in COM folder where Pass-Through Configuraton Tool has been installed.

8. Select [Virtual COM Ports Bus Enumerator] from the list in the dialog box [Select a Device Driver]. Click [Next] to complete the installation.

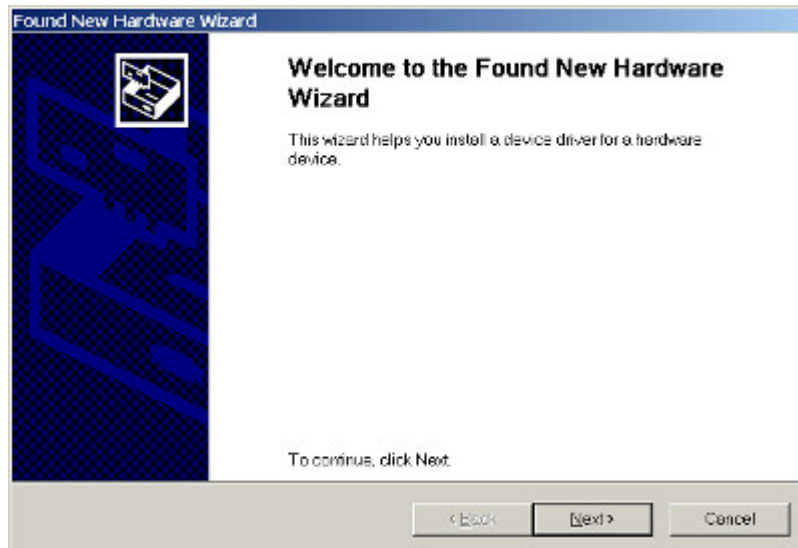
A new hardware is found automatically and the virtual COM port driver wizard will start.



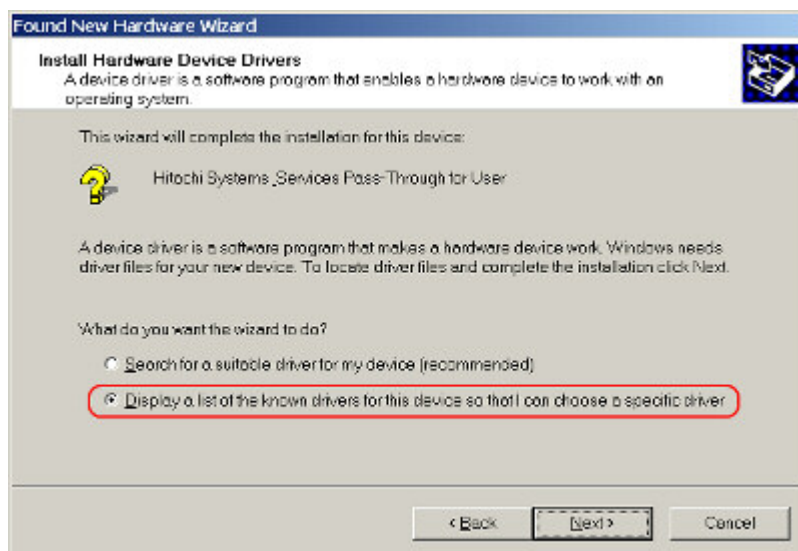
Installing Virtual COM Port Driver

The virtual COM port driver is installed on [Found New Hardware Wizard].

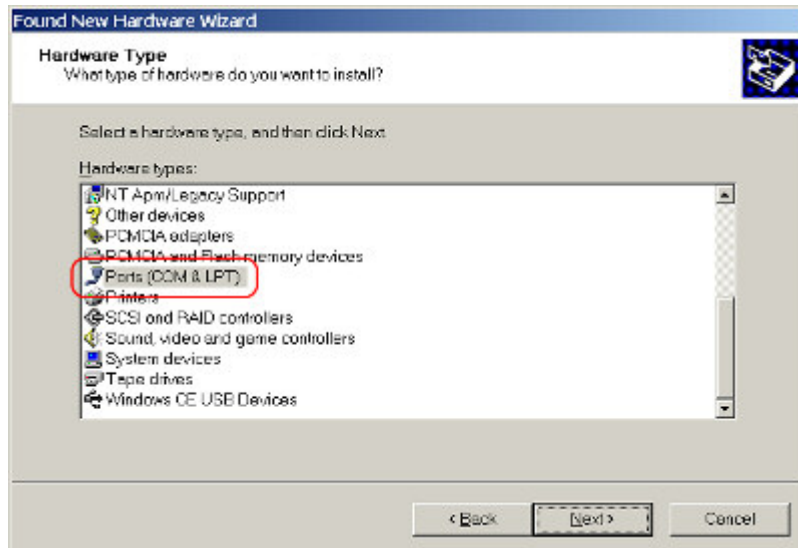
1. Finishing installing the bus driver, the dialog box [Welcome to the Found New Hardware Wizard] will be displayed. Follow the instruction by the wizard to install.



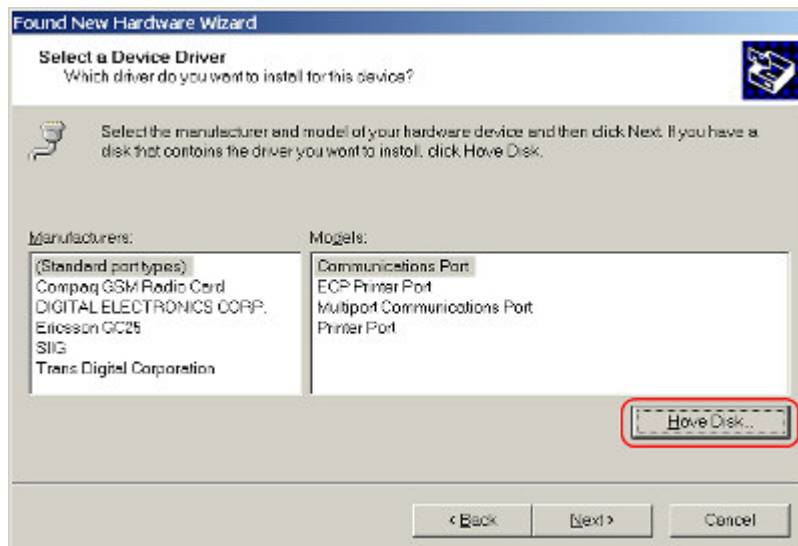
2. The dialog box [Install Hardware Device Drivers] will be displayed. Select [Display a list of the known drivers for this device so that I can choose a specific driver] and click [Next].



3. The dialog box [Hardware Type] will be displayed. Select [Ports (COM & LTP)] and click [Next].



4. The dialog box [Select a Device Driver] will be displayed. Click [Have Disk].



5. The dialog box [Install From Disk] will be displayed. Click [Browse] and select "vrcomdrv.inf".

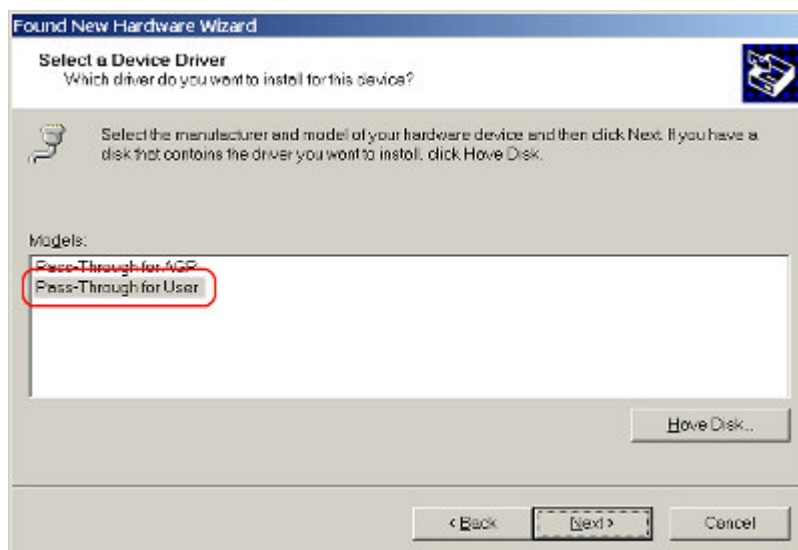
If you did not change where to install to when you installed Pass-Through Configuration Tool, specify "C:\Program Files\Pro-face\Pass-Through\COM".



MEMO

* INF file "vrcomdrv.inf" for the virtual COM port driver, which is required for installation, is in COM folder where Pass-Through Configuration Tool has been installed.

6. Select [Pass-Through for User] from the list in the dialog box [Select a Device Driver]. Click [Next] to complete the installation.



[↑Back to top page](#)

[--> Returns to the previous page](#)

[FAQ for use](#) | [Protection of Personal Information](#) | [Trademark Acknowledgments](#) | [About Intellectual Property Rights](#) | [Terms of Use](#)
Copyright (C) 2005- 2007 Digital Electronics Corporation All rights reserved.

Otasuke FAQ's

FAQ

Which PLC are available for using Pass Through Function?

* The below drivers supports the pass through function. The PLCs which are communicated by using below drivers are also available.

Manufacturer	Driver	Version	System Requirement
Mitsubishi Electric Corporation	Q Series CPU Direct	1.10.000 or higher	The following GPP function software package is required. <ul style="list-style-type: none"> Windows 2000: GX Developer Ver.7 or higher Windows XP: GX Developer Ver.8 or higher
	QnA Series CPU Direct	1.10.000 or higher	
	QUTE Series CPU Direct	1.10.000 or higher	
	FX Series CPU Direct	2.01.000 or higher	
Yaskawa Electric Corporation	MP Series SIO (Extension)	2.00.000 or higher	MPE720 Ver5.38/Ver6.04 or higher
	MP Series Ethernet (Extension)	2.00.000 or higher	
Yokokawa Electric Corporation	Personal COmputer Link SIO	2.00.000 or higher	WideField2 R3.01 or higher
	Personal Computer Link Ethernet	2.00.000 or higher	
OMRON Corporation	CS/CJ Series Host Link	2.01.000 or higher	CX-Programmer Version3.00 or higher

[↑Back to page top](#)

[--> Returns to the previous page](#)

[FAQ for use](#) |
 [Protection of Personal Information](#) |
 [Trademark Acknowledgments](#) |
 [About Intellectual Property Rights](#) |
 [Terms of Use](#)
 Copyright (C) 2005- 2007 Digital Electronics Corporation All rights reserved.



Pro-face

Reissue Password

Otasuke Pro! Search:

Search

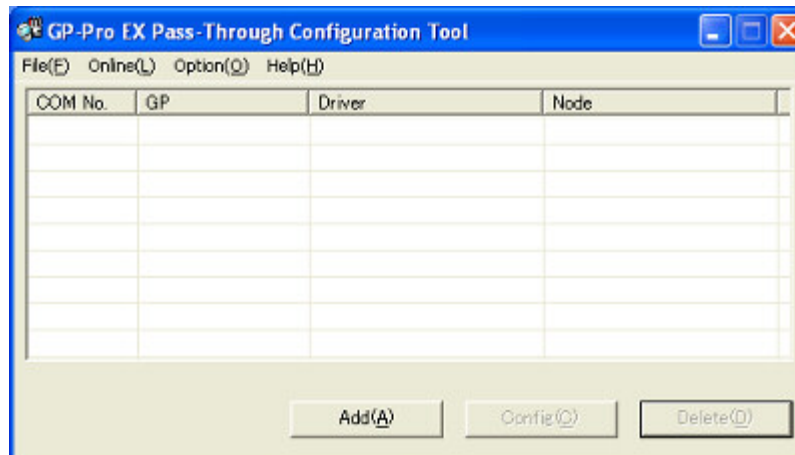
[| Products](#) | [Download](#) | [Contact us](#) | [Back to Top](#) |

Otasuke FAQ's

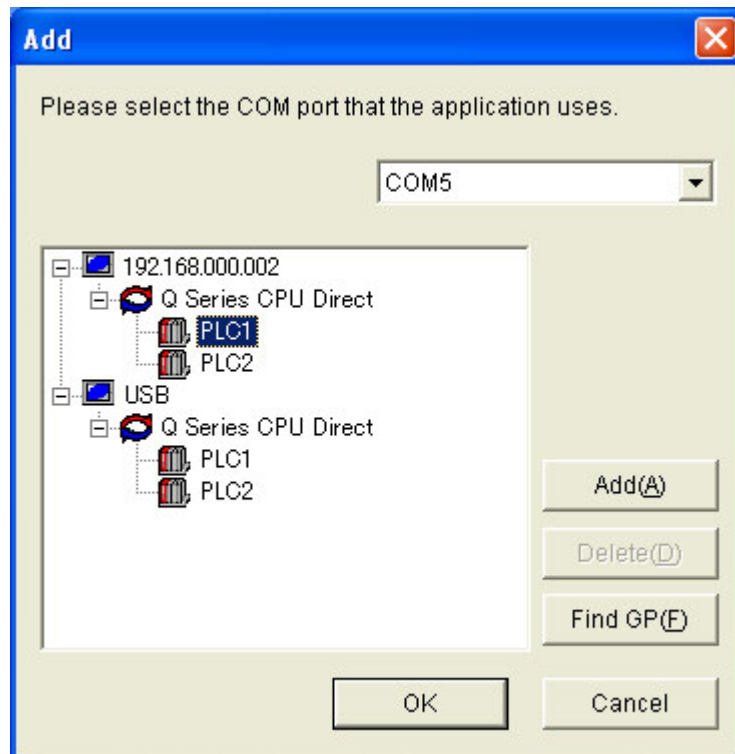
FAQ

I would like to use the pass through function. How do I set up?

1. To open Pass-Through Configuration Tool, please follow [Start] on the Windows desk top -> [Pro-face] -> [Pass-Through] -> [Pass-Through Configuration Tool].
2. If this is the first time to open [Pass-Through Configuration Tool], the virtual COM driver will be adjusted automatically. After the automatic adjustment of the virtual COM driver is finished, restart your PC.
3. Open [Pass-Through Configuration Tool] again.



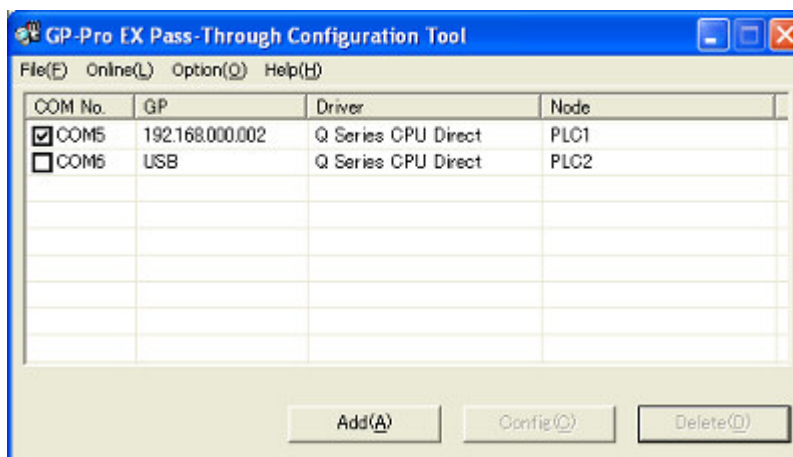
4. Click [Add] on the dialog box [Pass-Through Configuration Tool].
5. A list of available connection devices will be displayed on the dialog box [Add]. Select the COM port (the virtual COM) and a connection device that the application will use. Click [OK].



MEMO

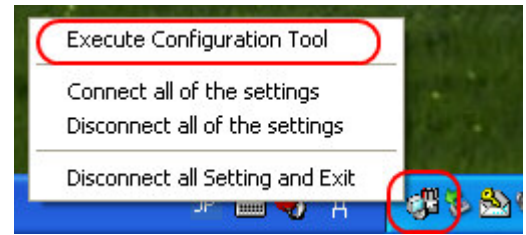
* If the connection device to use is not displayed, please click [Find GP]. If the connection device is still not displayed after [Find GP], click [Add].

- The combination of the virtual COM and the connection device will be displayed on [Pass-Through Configuration Tool]. When the check box of the COM port is on, the virtual COM port is online.



MEMO

* During executing the pass through application, an icon is displayed on the task bar. Right-click the icon to display the menu. Select [Execute Configuration Tool].



[↑Back to top page](#)

[--> Returns to the previous page](#)

[FAQ for use](#) | [Protection of Personal Information](#) | [Trademark Acknowledgments](#) | [About Intellectual Property Rights](#) | [Terms of Use](#)

[Copyright](#) (C) 2005- 2007 Digital Electronics Corporation All rights reserved.